

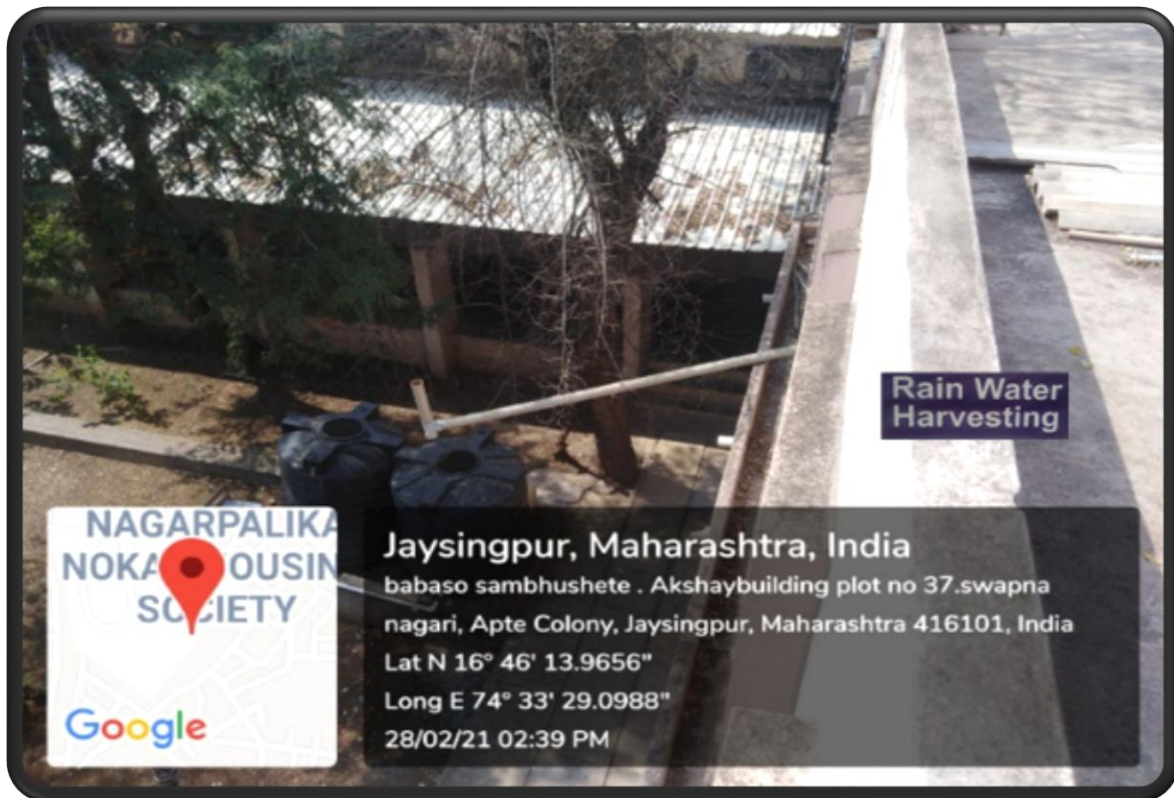
7.1.4

Water conservation facilities
available in the Institution

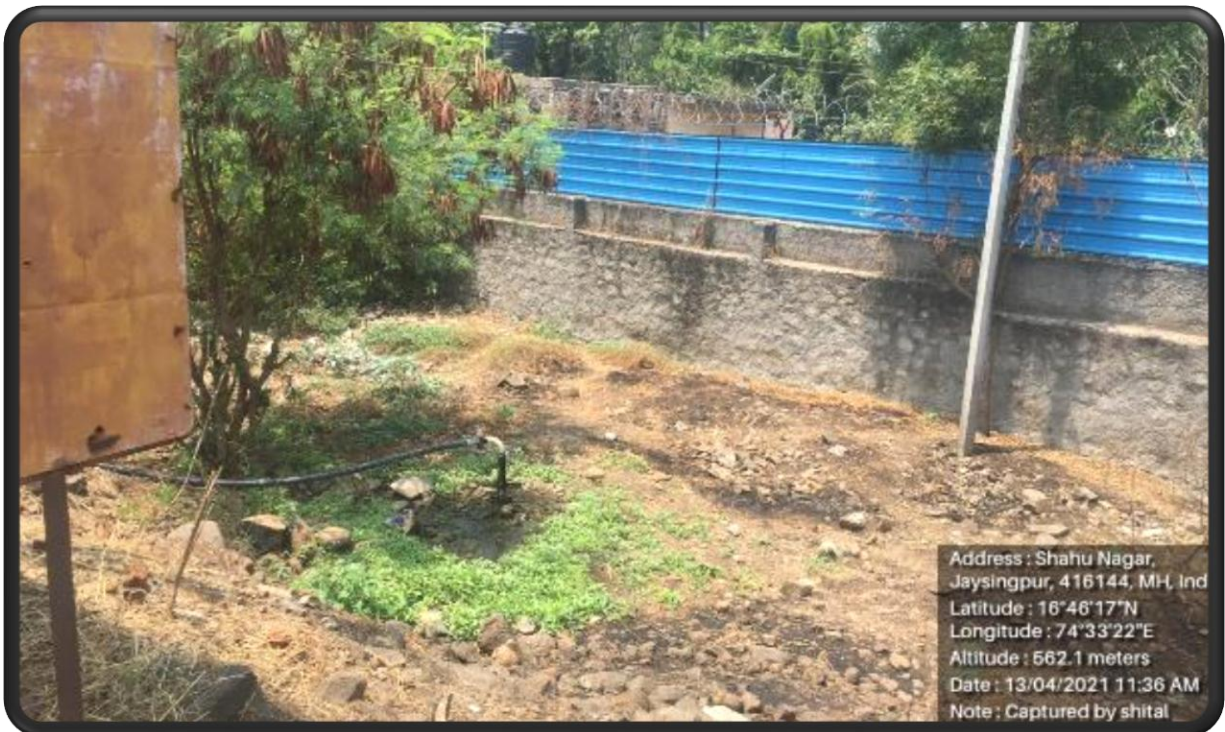
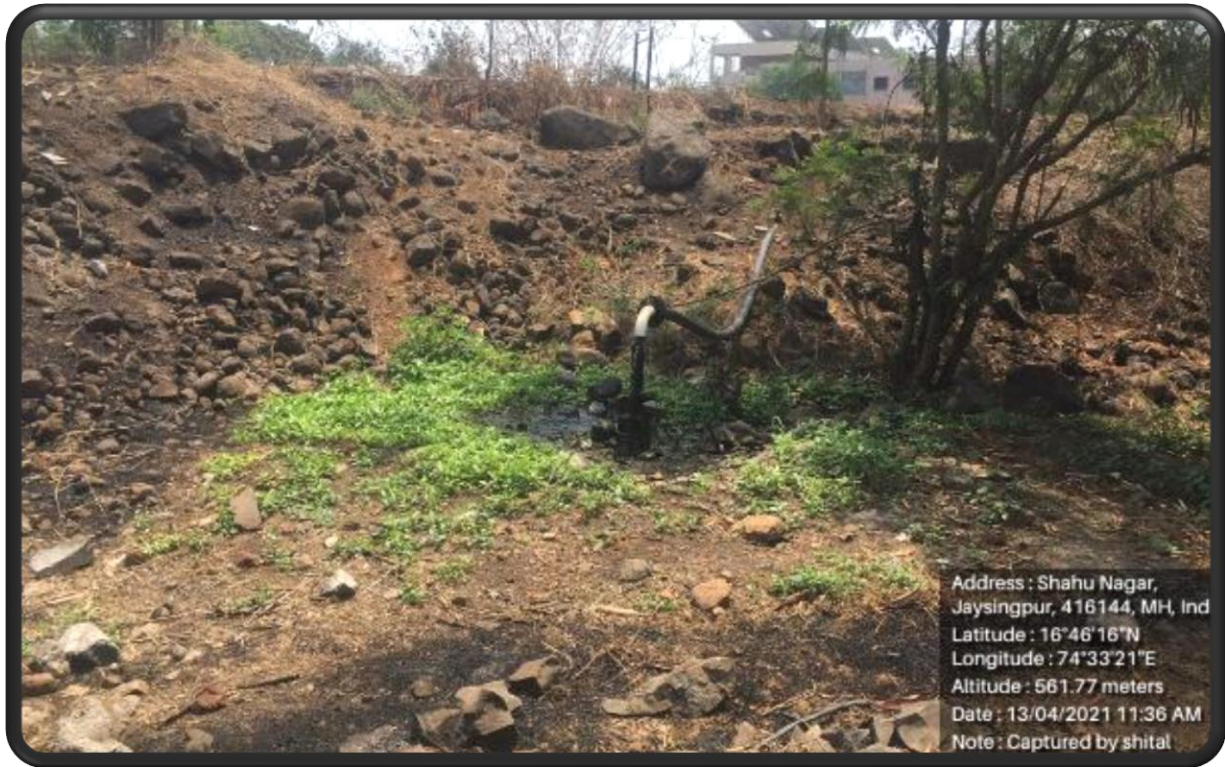


- 1.Rain water harvesting**
- 2.Borewell /Open well recharge**
- 3.Construction of tanks and bunds**
- 4.Waste water recycling**
- 5.Maintenance of water bodies and distribution system in the campus**

1. Rain water harvesting

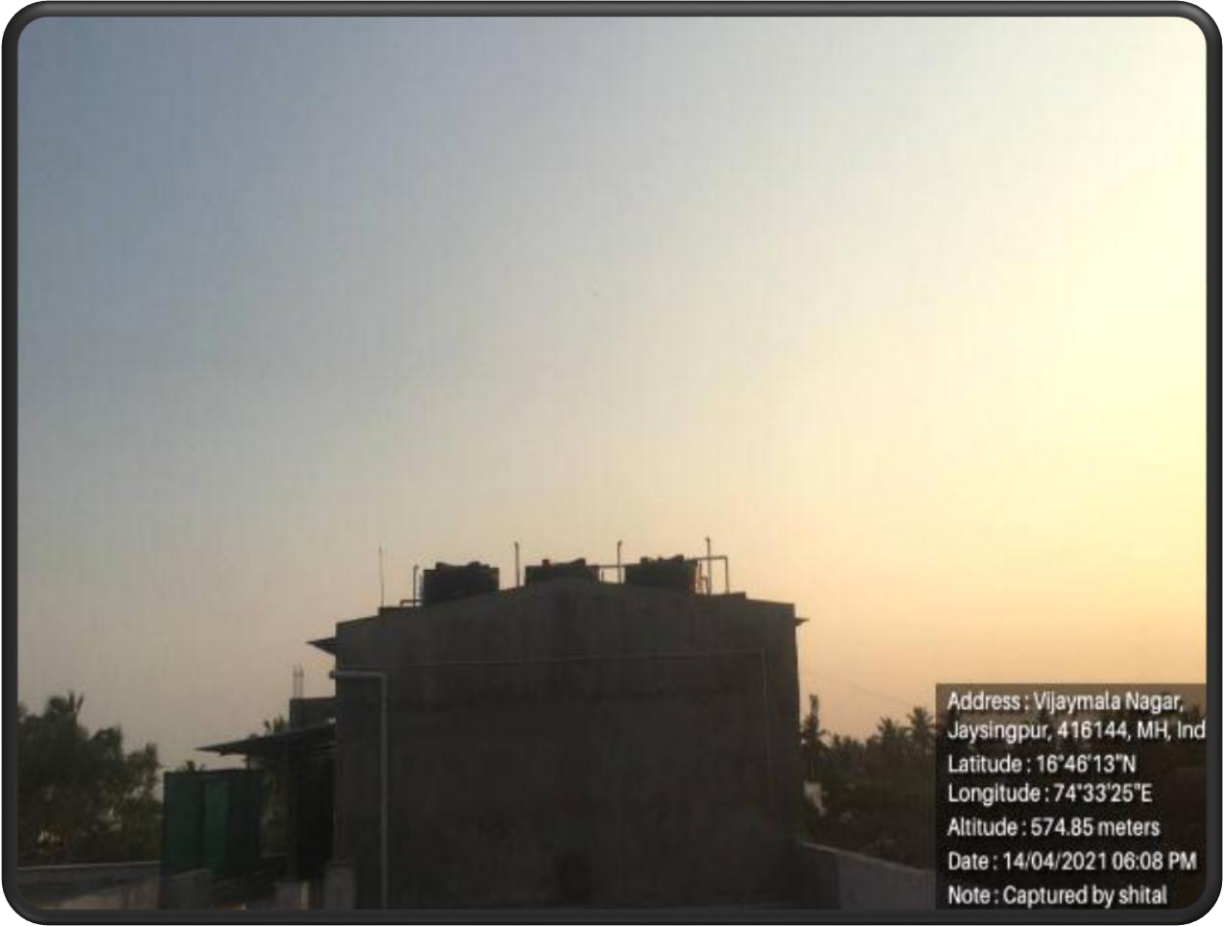


2. Borewell / Open well recharge



3. Construction of tanks and bunds





Address : Vijaymala Nagar,
Jaysingpur, 416144, MH, Ind
Latitude : 16°46'13"N
Longitude : 74°33'25"E
Altitude : 574.85 meters
Date : 14/04/2021 06:08 PM
Note : Captured by shital

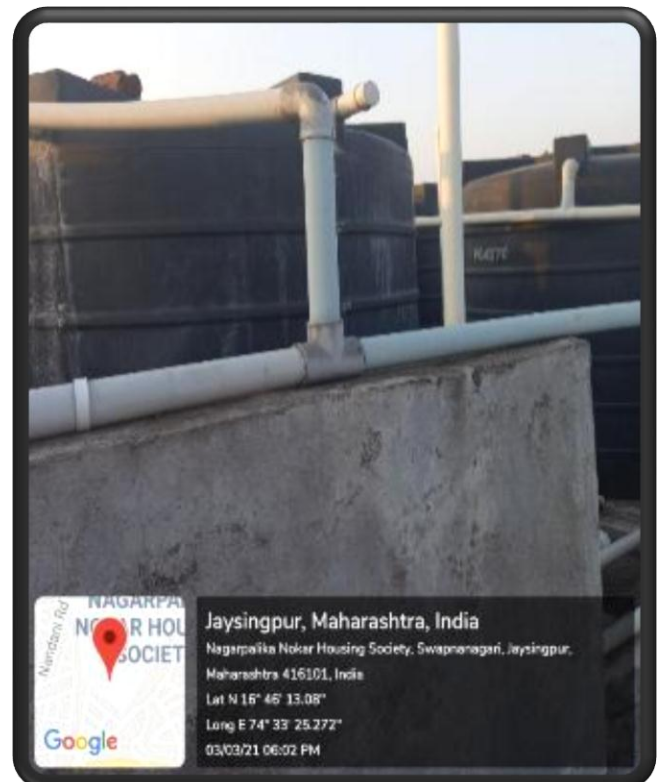
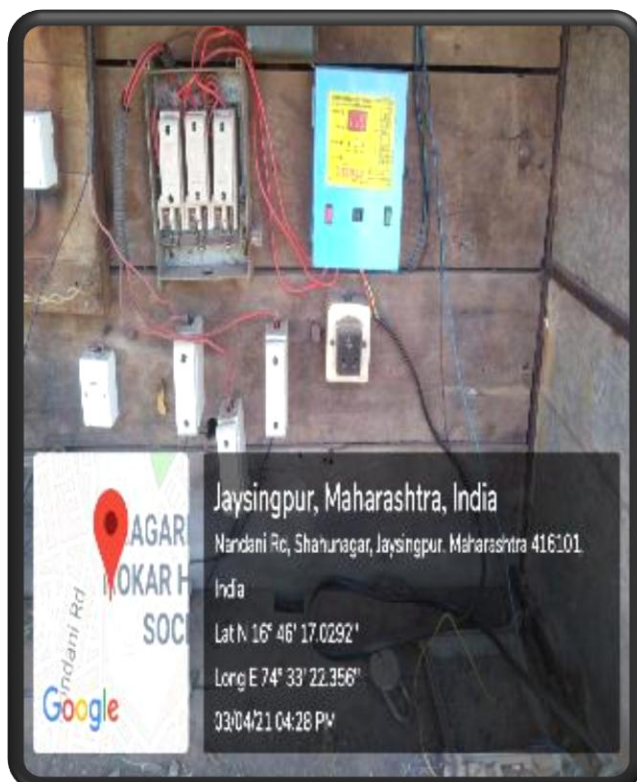
4. Waste water recycling

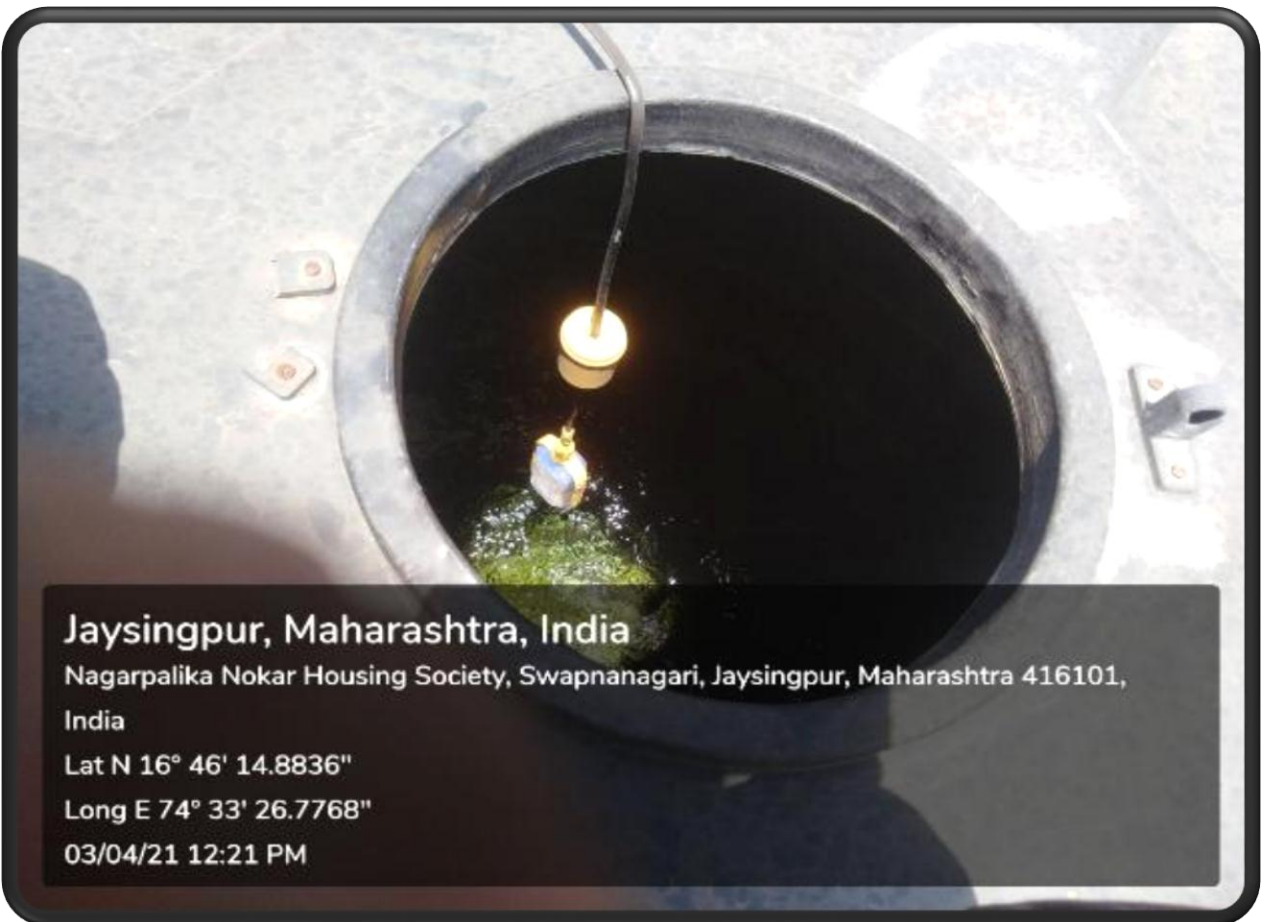
Patch of plantation contains banana plants



5. Maintenance of water bodies and distribution system in the campus.

Maintains of water bodies and sources will be done by installing advanced automatic sensor based on-off systems. The storage tanks arranged in such way that equal distribution of water is obtained in each tank.





Jaysingpur, Maharashtra, India
Nagarpalika Nokar Housing Society, Swapnanagari, Jaysingpur, Maharashtra 416101,
India
Lat N 16° 46' 14.8836"
Long E 74° 33' 26.7768"
03/04/21 12:21 PM